

ABOUT US

Established in the year 1983, Om Sakthi Industries (OSI) an IATF 16949:2016 certified company was initially founded to cater automotive industry by providing metal component solutions; eventually transformed into one of the leading manufacturers and supplier of automotive, non-automotive components and hydraulic and pneumatic solutions.

With the state-of-the-art manufacturing facility, highly skilled team, international quality standards and wide of range product offerings OSI became a preferred metal components and safety critical components supplier to major oem's and tier 1 companies spread across the globe. we serve various sectors like automotive, aerospace, renewable energy, power production, railways, oil & gas, farm equipment, off road vehicles, construction and mining.

OUR SPECIALIZATION

- ▶ Hot & cold forged components
- ▶ Precision machined components
- ▶ High pressure Hydraulic & Pneumatic solutions
- ▶ General engineering components

WHY CHOOSE OSI?

- ▶ Over 4 decades of experience in the industry
- ▶ Wide range of product portfolio
- ▶ Competitive cost archived through lean manufacturing
- ▶ We follow international standards
- ▶ On time delivery through systematic supply chain network
- ▶ Customized solutions
- ▶ Delivering quality through statistical process control on all levels.

FACILITIES

- ▶ State of the art Forging and Machining facilities
- ▶ In house fully automated surface treatment facility
- ▶ Highly sophisticated metrology lab facility.
- ▶ Automated assembly facility.
- ▶ Automated testing facilities like high pressure leak testing, Vacuum testing, Corrosion testing
- ▶ Customized automated inspection facility

FEW OF OUR ESTEEMED CLIENTS



BOSCH



Brakes India

HL Mando



Bonfiglioli

BRAKE COMPONENTS



Piston Pin



Plunger



Cam Shafts



Control Valve piston



Push Rod



Control Shaft



Knurled Push Rod



Clevis Push Rod

APPLICATION	Commercial Vehicles, Passenger Vehicles, Off- Road Vehicles, Earth Movers & Farm Equipments
MATERIAL	Aluminium, Carbon Steel
OD SIZE / LENGTH	10 Dia — 120 Dia / 20 mm — 200 mm
PROCESS	Forged — Cold/hot & Precision Machined

Transmission COMPONENTS



Gear Shaft Assembly



Pinion Spline Shaft



Transmission Gears



Oil Adaptors



Spline Shaft



Rotor Cam Gears



Cam Shaft



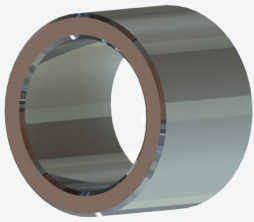
Pinion Shaft



Output Shaft

APPLICATION	Commercial Vehicles, Passenger Vehicles, Farm Equipments, Earth Movers & Mining Equipments
MATERIAL	Hardened Carbon Steel
PROCESS	Forged — Cold/hot & Precision Machined

ENGINE COMPONENTS



Cam Shaft Bush



Crank Bush



Oil Pump Shaft



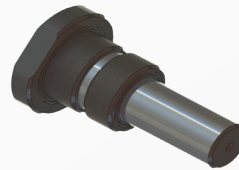
Piston Pin



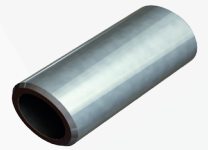
Rocker Shaft



Oil Pump Shaft



Pivot Pin



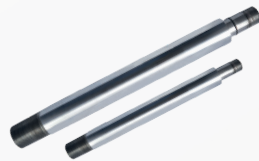
Sleeve

APPLICATION	Commercial Vehicles, Passenger Vehicles, Earth Movers & Off-road Vehicles
MATERIAL	High Carbon Steel
PROCESS	Forged — Cold/hot & Precision Machined

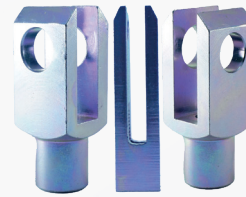
HYDRAULIC COMPONENTS



Clevis



Cylinder Shaft



Clevis Yoke



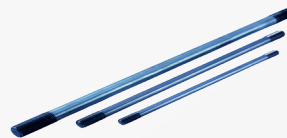
Clevis Pin



Glands



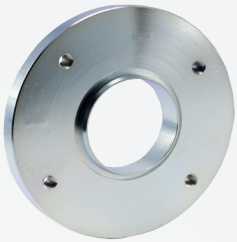
Bushes



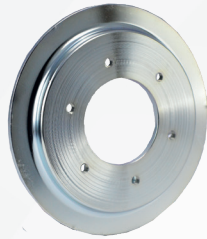
Tie Rods

APPLICATION	Hydraulic Cylinders, Commercial & Passenger Vehicles, Farm Equipment, Earth Movers & Mining Equipments
MATERIAL	Carbon Steel
PROCESS	Forged — Cold/hot & Precision Machined

FLANGES



Socket Flange



Stepped Flange



Weld Flange



Spacer



Threaded Flange



Flange Connector



Blind Collar Flange

APPLICATION	Automotive, Oil & Gas, Valve Systems
MATERIAL	Carbon Steel & Stainless Steel
SIZE	20mm — 400 mm
PROCESS	Hot Forged & Precision Machined

QUICK RELEASE COUPLINGS



Poppet Style Qrc



Double Check Qrc



Single Shut-off Qrc



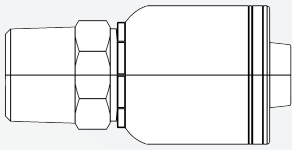
Flat Face Qrc



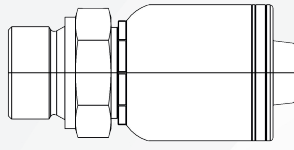
Poppet Style Qrc

APPLICATION	Automotive, Hydraulic Equipments, Oil & Gas, Farm Equipments, Mining & Earth Movers
MATERIAL	Carbon Steel, Stainless Steel, Brass
FUNCTION	Fluid & Gas Transfer Solution
SIZE RANGE	1/4" - 2"
THREAD	BSP, NPTF, JIC 37°, ORFS, METRIC

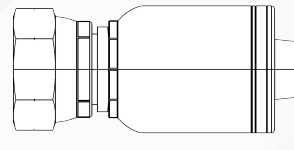
HOSE FITTINGS - ONE PIECE FITTINGS



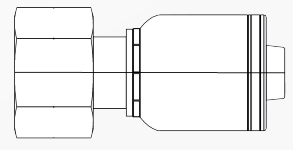
HF-A01-Straight



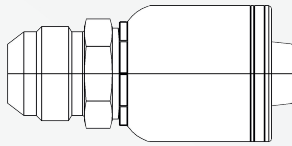
HF-A02-Straight



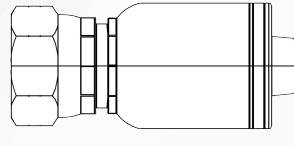
HF-A03-Straight



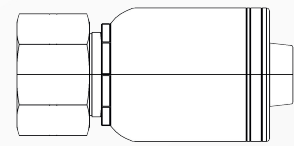
HF-A04-Straight



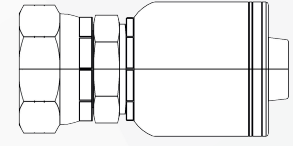
HF-A05-Straight



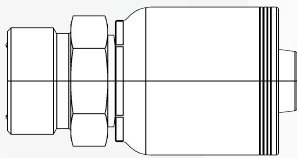
HF-A06-Straight



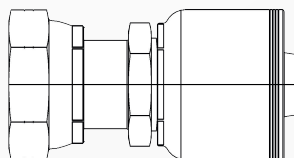
HF-A07-Straight



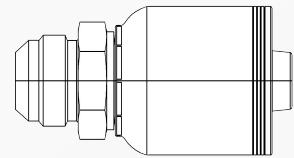
HF-A08-Straight



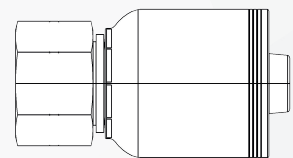
HF-A09-Straight



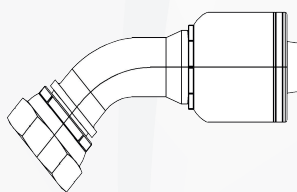
HF-A10-Straight



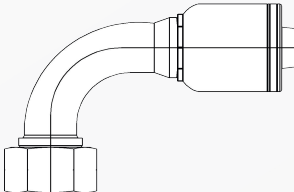
HF-A11-Straight



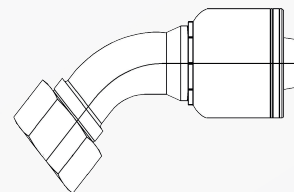
HF-A12-Straight



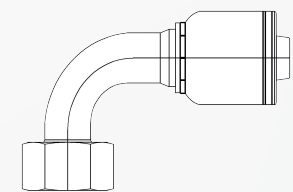
HF-A13-37° Elbow



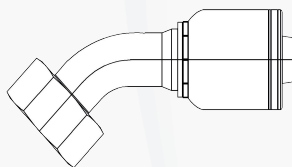
HF-A14-45° Elbow



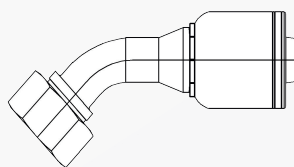
HF-A15-37° Elbow



HF-A16-45° Elbow



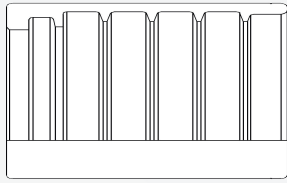
HF-A17-37° Elbow



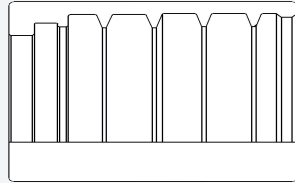
HF-A18-37° Elbow

APPLICATION	Automotive, Hydraulic Equipments, Oil & Gas, Farm Equipments, Mining & Earth Movers
MATERIAL	Carbon Steel, Stainless Steel, Brass
FUNCTION	Fluid & Gas Transfer Solution
SIZE RANGE	1/4" - 2"
THREAD	BSP, NPTF, JIC 37°, ORFS, METRIC

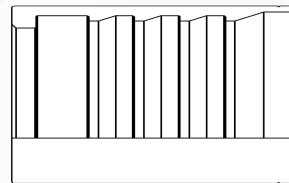
HOSE FITTINGS - TWO PIECE FITTINGS



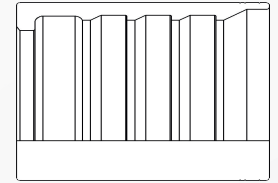
HFS001-Ferrule
No Skive



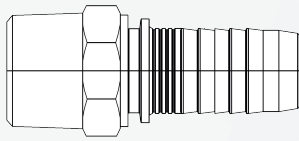
HFS002-Ferrule
No Skive



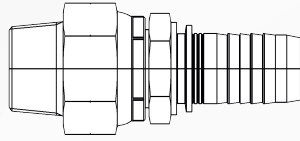
HFS003-Ferrule
Skive



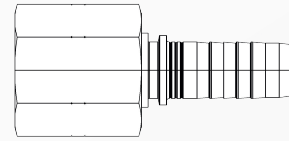
HFS004-Ferrule
Skive



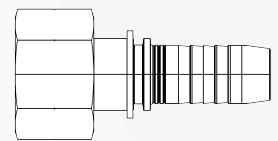
HF-B01-Straight



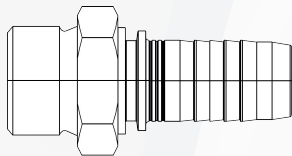
HF-B02-Straight



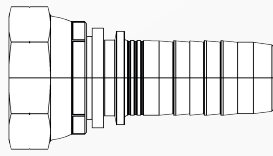
HF-B03-Straight



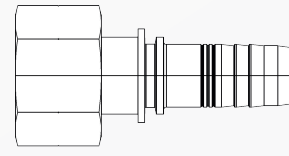
HF-B04-Straight



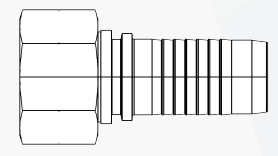
HF-B05-Straight



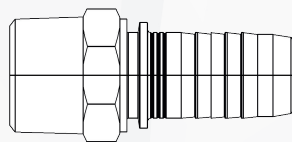
HF-B06-Straight



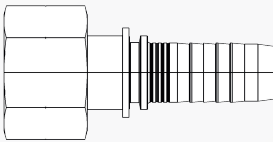
HF-B07-Straight



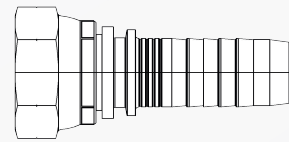
HF-B08-Straight



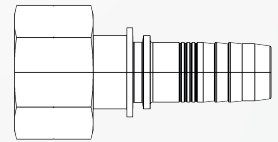
HF-B09-Straight



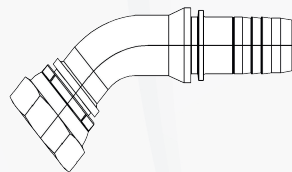
HF-B10-Straight



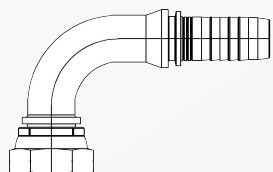
HF-B11-Straight



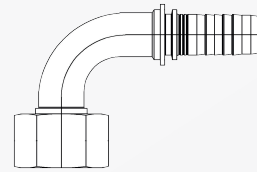
HF-B12-Straight



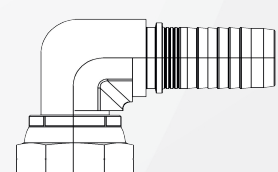
HF-B13-37° Elbow



HF-B14-45° Elbow



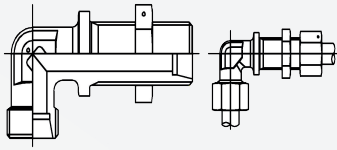
HF-B15-45° Elbow



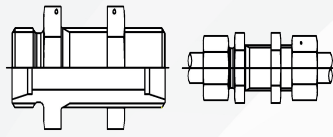
HF-B16-45° Elbow

APPLICATION	Automotive, Hydraulic Equipments, Oil & Gas, Farm Equipments, Mining & Earth Movers
MATERIAL	Carbon Steel, Stainless Steel, Brass
FUNCTION	Fluid & Gas Transfer Solution
SIZE RANGE	1/4" - 2"
THREAD	BSP, NPTF, JIC 37°, ORFS, METRIC

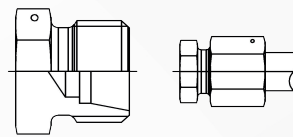
TUBE FITTINGS & CONNECTORS



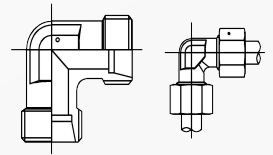
Bulk Head Elbow



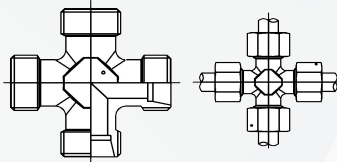
Bulk Head Union



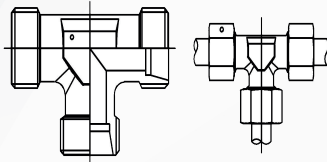
Closure Plug



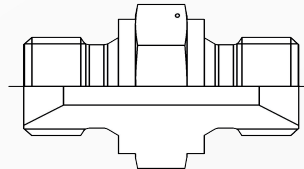
Equal Elbow



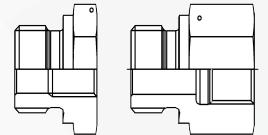
Equal Cross



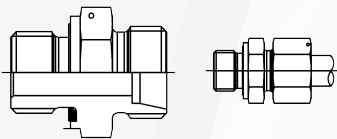
Equal Tee



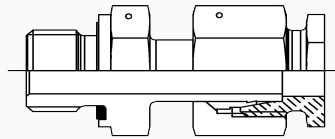
Hose Adaptor



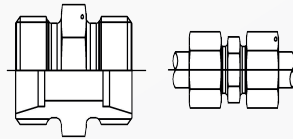
Male-Female Reducer



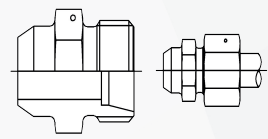
Parallel Male Stud Coupling



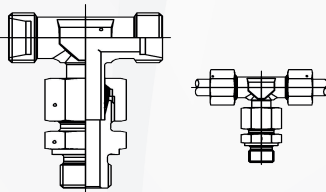
Stand Pipe Connector



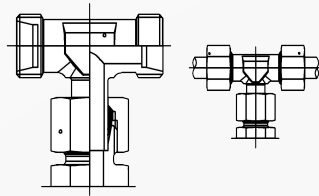
Straight Coupling



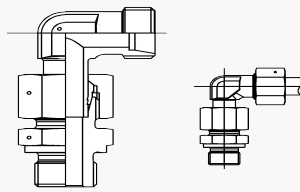
Weld Coupling



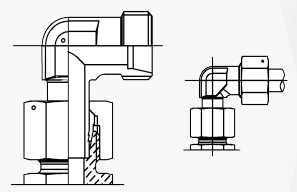
Swivel Branch Tee Connector



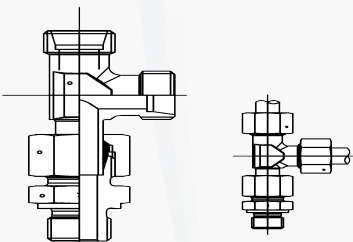
Swivel Branch Tee



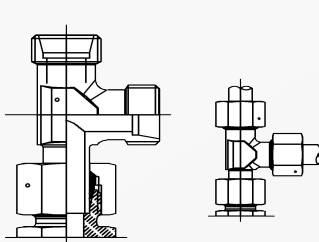
Swivel Elbow Connector



Swivel Elbow



Swivel Run Tee Connector



Swivel Run Tee

APPLICATION

Automotive, Hydraulic Equipments, Oil & Gas, Farm Equipments, Mining & Earth Movers

MATERIAL

Carbon Steel, Stainless Steel, Brass

FUNCTION

Fluid & Gas Transfer Solution

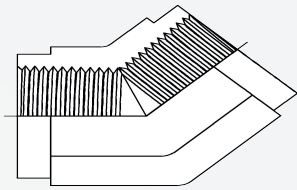
SIZE RANGE

1/4" - 2"

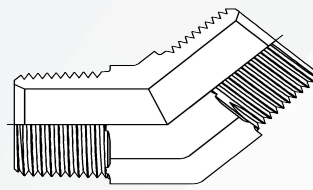
THREAD

BSP, NPTF, JIC 37°, ORFS, METRIC

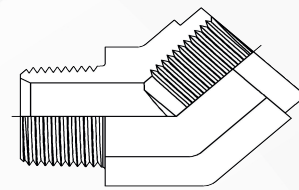
PIPE FITTINGS & CONNECTORS



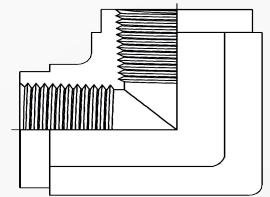
45° Female Elbow



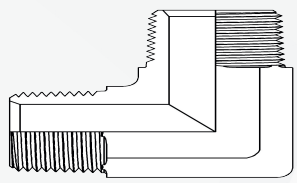
45° Male Elbow



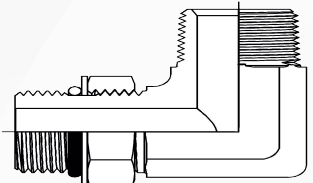
45° Elbow



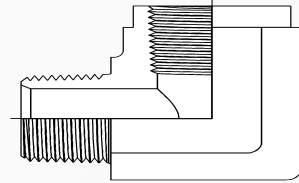
90° Female Elbow



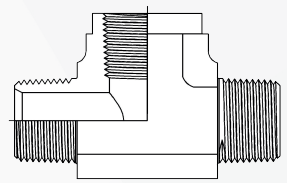
90° Male Elbow



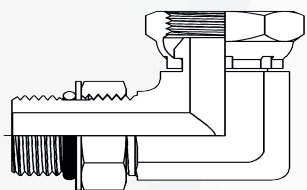
90° Straight Thread Elbow



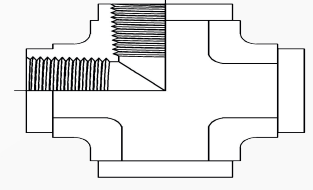
90° Elbow



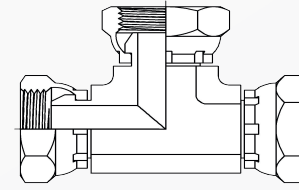
Female Branch Tee



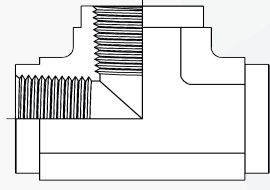
Sae Male x Female Swivel 90°



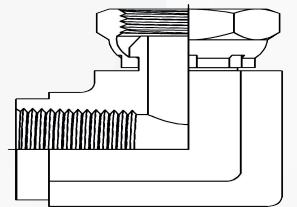
Female Cross



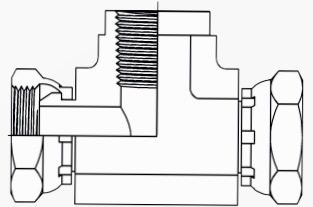
Female Swivel Union Tee



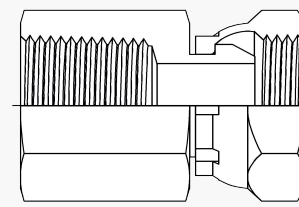
Female Tee



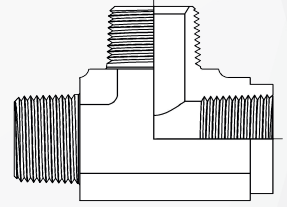
Female Swivel 90°



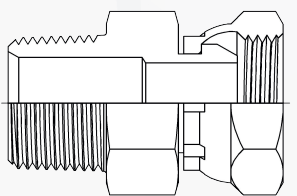
Female Swivel Branch Tee



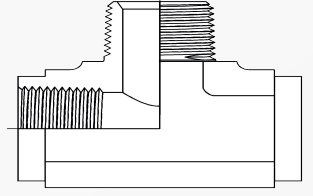
Female Swivel Straight



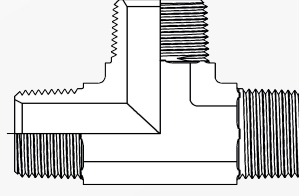
Female Run Tee



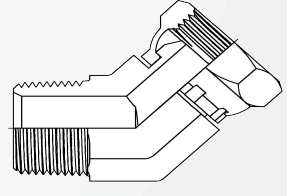
Male To Female Swivel Straight



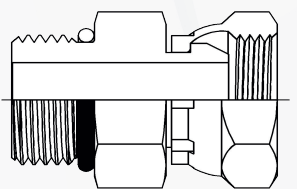
Male Branch Tee



Male Tee



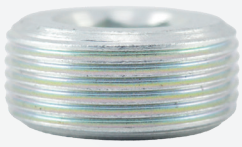
Male X Female Swivel 45°



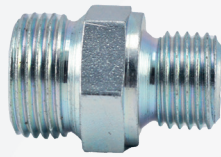
Male Sae To Female Swivel Straight

APPLICATION	Automotive, Hydraulic Equipments, Oil & Gas, Farm Equipments, Mining & Earth Movers
MATERIAL	Carbon Steel, Stainless Steel, Brass
FUNCTION	Fluid & Gas Transfer Solution
SIZE RANGE	1/4" - 2"
THREAD	BSP, NPTF, JIC 37°, ORFS, METRIC

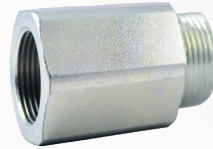
PLUGS & ADAPTORS



Broached Plug



Bsp Male - Male Connector



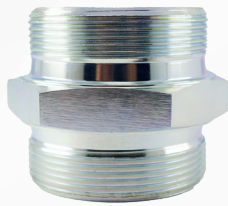
Hex Hydraulic Adaptor



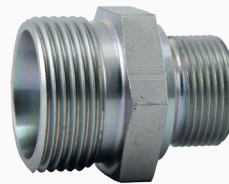
Bulkhead Connector



Forged Adaptor



Hex Bsp Male Adaptor



Bsp Male Connector



Pressure Adaptor



Hex Lock-Tite Plug



Hose Adaptor



Hex Adaptor



Hex Plug



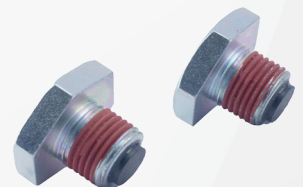
Npt X Jic Adaptor



Bulkhead T Connector



Voss Adaptor



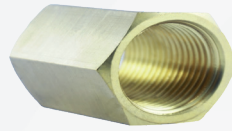
Magnetic Plug

APPLICATION	Automotive, Hydraulic Equipments, Oil & Gas, Farm Equipments, Mining & Earth Movers
MATERIAL	Carbon Steel, Stainless Steel, Aluminium
FUNCTION	Fluid & Gas Transfer Solution
SIZE RANGE	1/4" - 2"
THREAD	BSP, NPTF, METRIC, ACME

BRASS FITTINGS & COMPONENTS



Elbow Connector
Cross



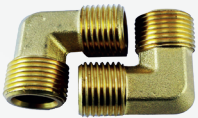
Valve Body



Valve adaptor



Male end connector



Elbow Connector



T-connector



Pressure relief valve



Jic Male connector



Hex Male connector



Hose end connector



Female connector



Valve connector

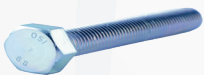
APPLICATION

Automotive, Hydraulics, Aerospace, Electrical
And Power Sector

PROCESS

Hot/cold Forged & Precision Machined

FASTENING SYSTEMS



Head Hex Screw



Collar Bolt



Socket head screw



Socket Cap Screw



Pivot Bolt



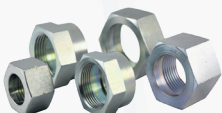
Weld Bolt



Stud



Stud



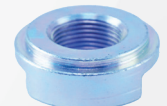
Hydraulic Nuts



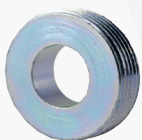
Hex Nuts



Threaded boss



Slotted Lock nut



Ring Nut



Washers

APPLICATION

Automotive, Railways, Agri Equipments, Aerospace, Oil &
Gas, Hydraulics, General Eng. Constructions And mining

MATERIAL

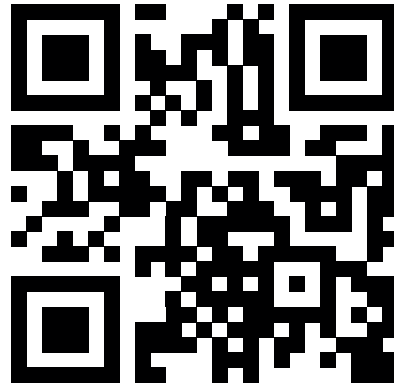
Carbon Steel & Stainless

PROCESS

Cold Forged & Precision Machined


THREAD TYPES


Bsp, Metric, Nptf, Unf, Uns



www.omsakthiindustries.in

OM SAKTHI INDUSTRIES PRIVATE LIMITED

 No 227/1A, Nageshwara Rao Road
Athipet, Chennai - 600058
Tamil Nadu, India

 +91 - 9025788687
+91 - 8838410342

 osc@omsakthiindustries.in